



# 350 MIRACLE MILE

RETAIL SPACE

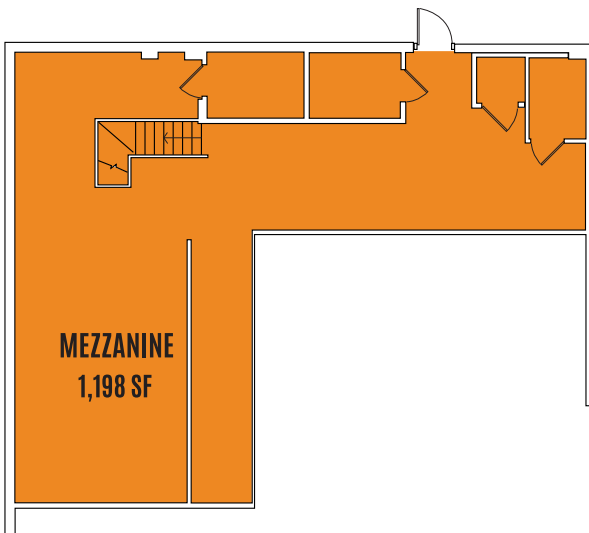
CORAL GABLES, FLORIDA 33134

# 350 MIRACLE MILE

## // PROPERTY OVERVIEW



27' OF FRONTAGE



**MEZZANINE**  
1,198 SF



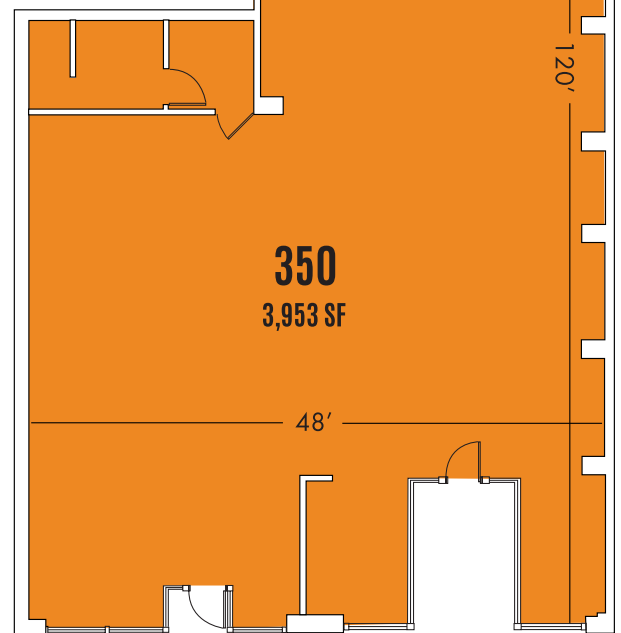
### PRIME LOCATION

3,953 SF space on Miracle Mile, an elegant and sophisticated destination to live, shop, play, and work in downtown Coral Gables.



### PEDESTRIAN FRIENDLY

Home to Miami's finest retail boutiques and acclaimed restaurants, Miracle Mile has a walkability score of 98.



**350**  
3,953 SF

48'

120'



### CULTURAL HUB

Steps away from renowned arts, cultural, & educational institutions:

Miracle Theater,  
Coral Gables Museum,  
& Coral Gables Cinema



### NEIGHBORS

Surrounded by 120 trendy restaurants and 115 top retailers including Hillstone, Morton's, Kettal, Forte, & Pronovias.



### PARKING-A-PLENTY

The area boasts more than 2,400 parking spaces & 6 valet stations right on Miracle Mile.



For retail leasing information, please contact:

MINDY MCILROY • [mmcilroy@terranozacorp.com](mailto:mmcilroy@terranozacorp.com) • 305.970.6344

LAUREN ROBBINS • [lrobbins@terranozacorp.com](mailto:lrobbins@terranozacorp.com) • 757.581.2766







## // SURROUNDING AREA

Known as the City Beautiful, Coral Gables flourishes as the garden city its founders envisioned. Lush, canopy trees line the avenues and Mediterranean architecture decorates the buildings. Coral Gables boasts a unique blend of residential allure, international influence, and a thriving business environment. It is home to a mix of commercial spaces, from modern office buildings to unique boutiques and a cosmopolitan restaurant scene. The city is very desirable to businesses as it is unaffected by seasonal shifts unlike other parts of Florida. It is also close in proximity to Miami International Airport and the Port of Miami to facilitate efficient logistics for business and personal travels.

### DOWNTOWN CORAL GABLES

**150**  
Multi-National  
Companies // **100K**  
Total Daytime  
Population

**172**  
Businesses // **11.5M**  
SF of  
Office Space

**1.7%**  
Vacancy Rate // **21**  
Consulates

### CORAL GABLES SALES

**\$1.5B**  
Total  
Retail Sales

**\$363M** // **\$31,502**  
Total Hospitality Sales // Total Retail Sales  
per Capita

### CORAL GABLES POPULATION

**50K** // **39**  
Residents // Median Age

**\$977K** // **\$114K**  
Median Home Price // Median  
HH Income

### VISITORS TO CORAL GABLES

**19%** // **3M**  
Florida Resident // Tourist Annually  
Visitors

**11%** // **9%**  
FL Resident // International  
Overnight Visitors // Overnight Visitors



For retail leasing information, please contact:

MINDY MCILROY • [mmcilroy@terranovacorp.com](mailto:mmcilroy@terranovacorp.com) • 305.970.6344

LAUREN ROBBINS • [lrobbins@terranovacorp.com](mailto:lrobbins@terranovacorp.com) • 757.581.2766



# CORAL GABLES

## //EVENTS & CELEBRATIONS



**TRICK OR TREAT ON THE MILE**  
October



**GIRALDA UNDER THE STARS**  
Nov thru April



**CHRISTMAS TREE LIGHTING**  
December



**CARNAVAL ON THE MILE**  
March



**4TH AT THE BILTMORE**  
July



**FESTIVAL OF THE ARTS**  
January

### NOTABLE EVENTS

#### ANNUALLY

Carnaval on the Mile  
Coral Gables Festival of the Arts  
NightGarden - Fairchild Botanical Gardens  
Miami Rum Renaissance Festival  
Coral Gables Food, Wine, and Spirits Festival  
Trick or Treat on the Mile  
The 4th at the Biltmore  
Taste the Gables  
Fiesta at the Park  
Annual Christmas Tree Lighting

#### MONTHLY

Giralda Live  
Gables Gallery Night  
Gables Bike Tours

#### OTHER EVENTS

Book Signings & Readings at Books and Books  
Artistic and cultural activations



**NIGHTGARDEN @ FAIRCHILD**  
November



For retail leasing information, please contact:

MINDY MCILROY • [mmcilroy@terranovacorp.com](mailto:mmcilroy@terranovacorp.com) • 305.970.6344

LAUREN ROBBINS • [lrobbins@terranovacorp.com](mailto:lrobbins@terranovacorp.com) • 757.581.2766



# MIRACLE MILE

## // LOCATION MAP OVERVIEW



### DRIVE TIMES

#### // 00 to 15 min

University of Miami	// 09 min
Coconut Grove	// 12 min
Little Havana	// 12 min
Vizcaya Museum	// 14 min
South Miami	// 14 min
MIA (Airport)	// 15 min
Brickell	// 15 min

#### // 16 to 29 min

Downtown Miami	// 16 min
Kendall	// 20 min
Design District	// 22 min
Doral	// 22 min
Pinecrest	// 22 min
Port of Miami	// 24 min
Wynwood	// 24 min
Key Biscayne	// 25 min
South Beach	// 27 min

#### // 30+ min

Miami Beach Conv Cntr	// 30 min
Hard Rock Stadium	// 30 min
Miami Lakes	// 30 min
Aventura	// 40 min



For retail leasing information, please contact:

MINDY MCILROY • [mmcilroy@terranovacorp.com](mailto:mmcilroy@terranovacorp.com) • 305.970.6344

LAUREN ROBBINS • [lrobbins@terranovacorp.com](mailto:lrobbins@terranovacorp.com) • 757.581.2766