



16935B

# PALM PLAZA

2ND GEN RESTAURANT SPACE  
OUTPARCEL SPACE  
MIAMI LAKES, FLORIDA 33015

# 16935B NW 67TH AVENUE

## // PROPERTY OVERVIEW



### SPACE AVAILABLE

2,207 SF outparcel opportunity.  
Pylon signage available.



### UPGRADES

Property upgrades totaling \$1.3 million, including new paint, landscaping, parking lot and façade renovations



### LOVED BY LOCALS

Healthy balance of daytime and night time traffic



### NEIGHBORS

Strong mix of local and national tenants with many in the top 10% nationwide. Join Navarro Pharmacy, Skechers, MDNow, and McDonald's



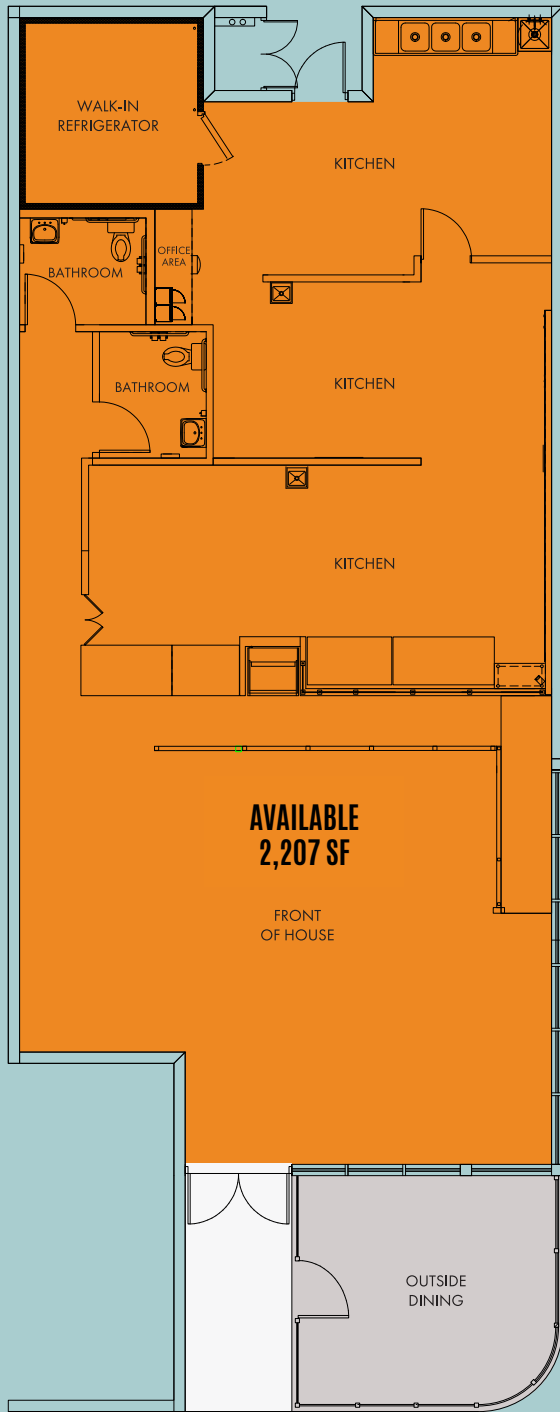
For retail leasing information, please contact:

MINDY MCILROY • [mmcilroy@terranovacorp.com](mailto:mmcilroy@terranovacorp.com) • 305.970.6344

LAUREN ROBBINS • [lrobbins@terranovacorp.com](mailto:lrobbins@terranovacorp.com) • 757.581.2766

# 16935B NW 67TH AVENUE

## SITE PLAN



 =SUBJECT



For retail leasing information, please contact:

MINDY MCILROY • [mmcilroy@terranovacorp.com](mailto:mmcilroy@terranovacorp.com) • 305.970.6344

LAUREN ROBBINS • [lrobbins@terranovacorp.com](mailto:lrobbins@terranovacorp.com) • 757.581.2766